

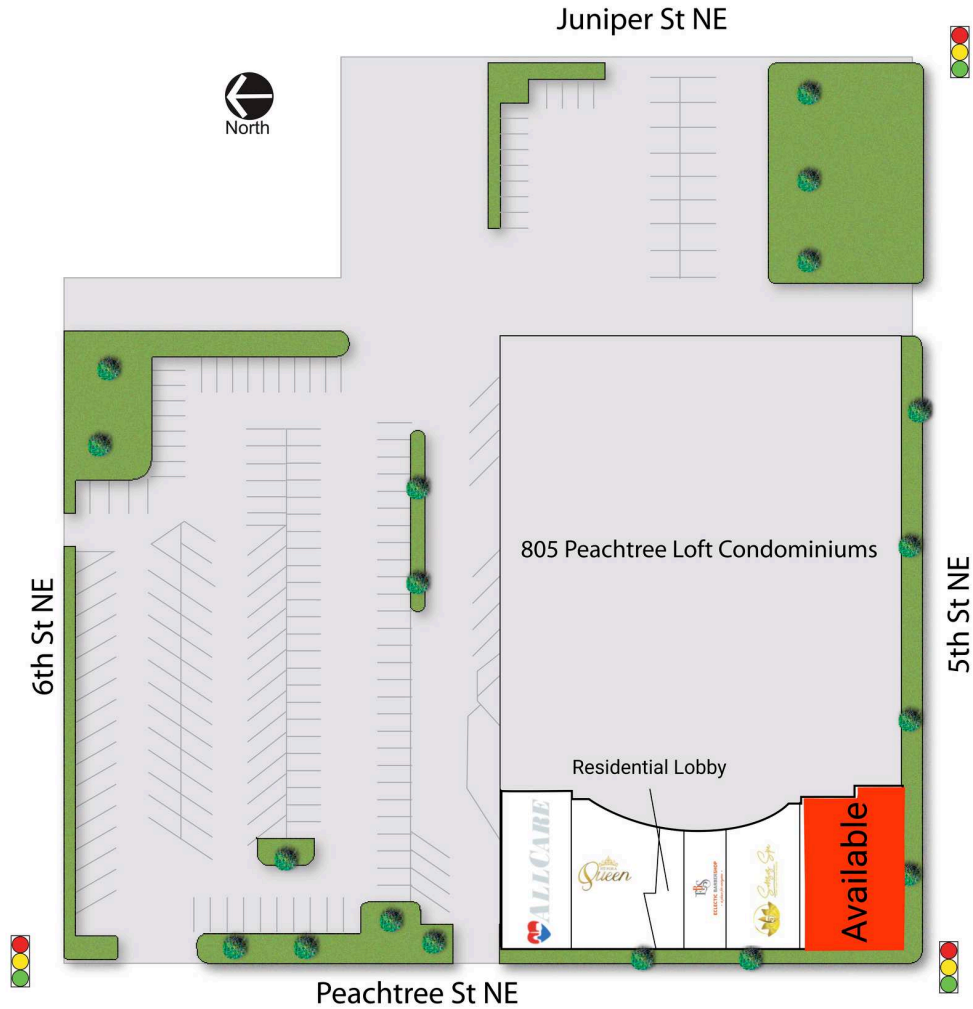
805 PEACHTREE

805 Peachtree St NE
Atlanta | GA | 30308



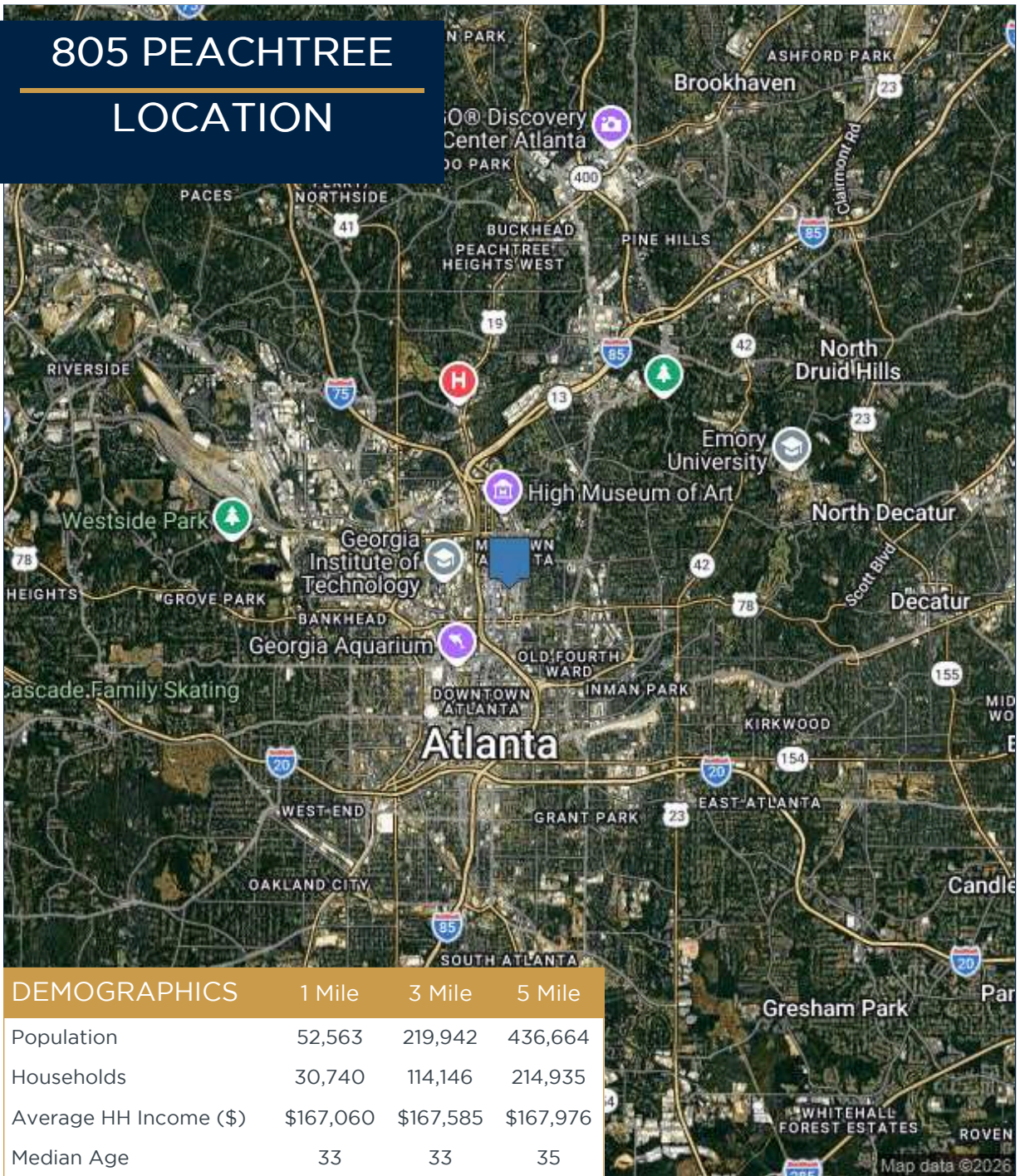
Leasing Contact: Dana Newby | 404-846-4033 | dnewby@cororealty.com

805 PEACHTREE SITE PLAN



A	AllCare Family Medicine + Urgent Care	1,812 SF	D	Eclectic Barbershop	937 SF
B	Fit For A Queen	4,477 SF	E	5 Senses Spa	2,148 SF
C	Residential Lobby		F	Available	3,358 SF

805 PEACHTREE LOCATION



DEMOGRAPHICS	1 Mile	3 Mile	5 Mile
Population	52,563	219,942	436,664
Households	30,740	114,146	214,935
Average HH Income (\$)	\$167,060	\$167,585	\$167,976
Median Age	33	33	35



Property Information:

- Located on Peachtree Street, on Atlanta's Midtown Mile.
- Excellent visibility and frontage along Peachtree Street.
- Over 3,000 residential units located within a 5 minute walk..
- A short walk to "Atlanta's Central Park", Piedmont Park.

805 PEACHTREE
TRADE AREA

