

ALPHARETTA CROSSING

11770 Haynes Bridge Road
Alpharetta | GA | 30009



Leasing Contact: Andrea Kenney | 404-846-4018 | akenney@cororealty.com

ALPHARETTA CROSSING SITE PLAN

Urban
HARDWARE

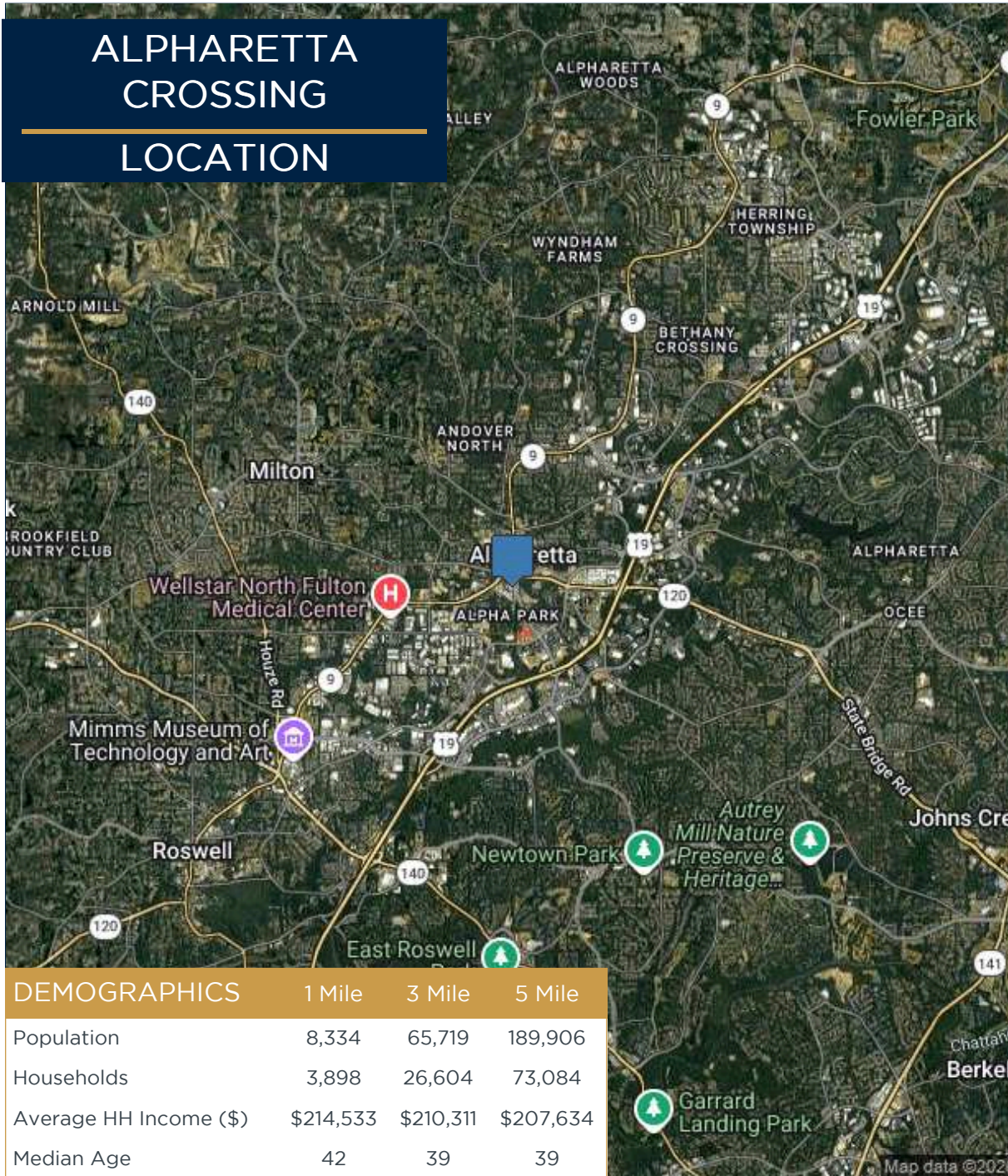


Coast Dental



101	Slurpin Ramen	1,750 SF	204	Chau's Tailor	900 SF	601	Kid to Kid	4,800 SF
102	Bagel Boys	1,750 SF	205	The UPS Store	1,500 SF	606	Coast Dental	3,200 SF
104	Hibachi Express	1,050 SF	301	Sid's Pizza	1,750 SF	701-702	Play Street Museum	2,800 SF
105-106	Alloy Personal Training	2,100 SF	302	Hair Fitness	1,050 SF	703-704	Wills Park Vet	3,600 SF
201	Chimney Cakes	900 SF	303-304	Rogers Florist	2,050 SF	801	Painting with a Twist	3,200 SF
202	Available	900 SF	401	Salons by JC	8,640 SF	900	Dance Harmony	4,000 SF
203	Andrej's Barber Shop	900 SF	501	Urban Hardware	44,664 SF	902	AJ' Home Cooking	4,000 SF

ALPHARETTA CROSSING LOCATION



Property Information:

Located in North Fulton growth corridor in the heart of Alpharetta's business district.

Excellent ingress/egress via signalized intersection on Haynes Bridge Road.

Tenants Include:

- Urban Hardware
- Salons by JC
- Bagel Boys
- Kid to Kid

The closest traffic count to the site estimates 39,180 cars per day at the intersection of Haynes Bridge Rd and Old Milton Parkway.

