

# BERKELEY HEIGHTS RETAIL

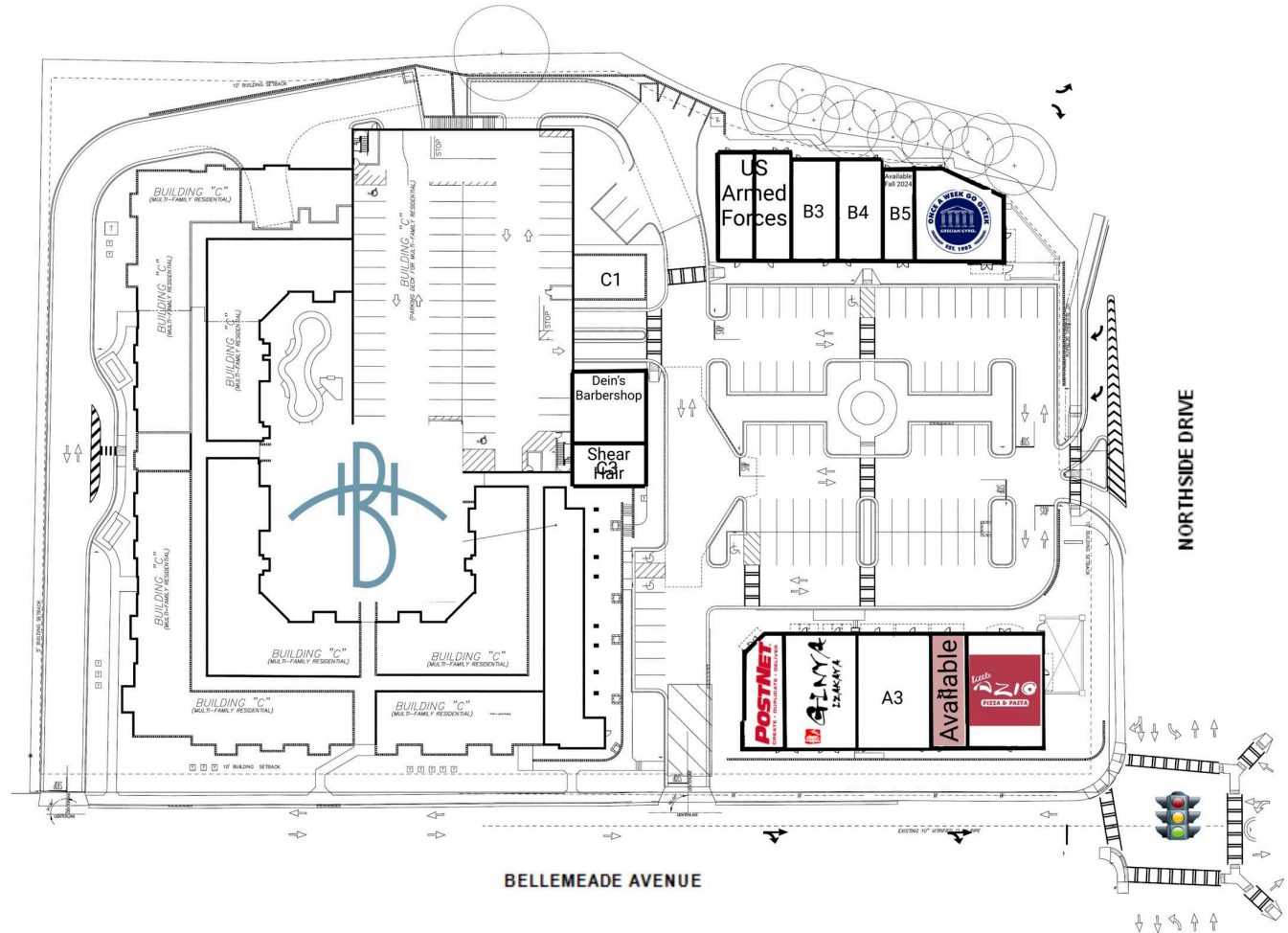
1700 Northside Drive  
Atlanta | GA | 30318



Leasing Contact: Dana Newby | 404-846-4033 | [dnewby@cororealty.com](mailto:dnewby@cororealty.com)

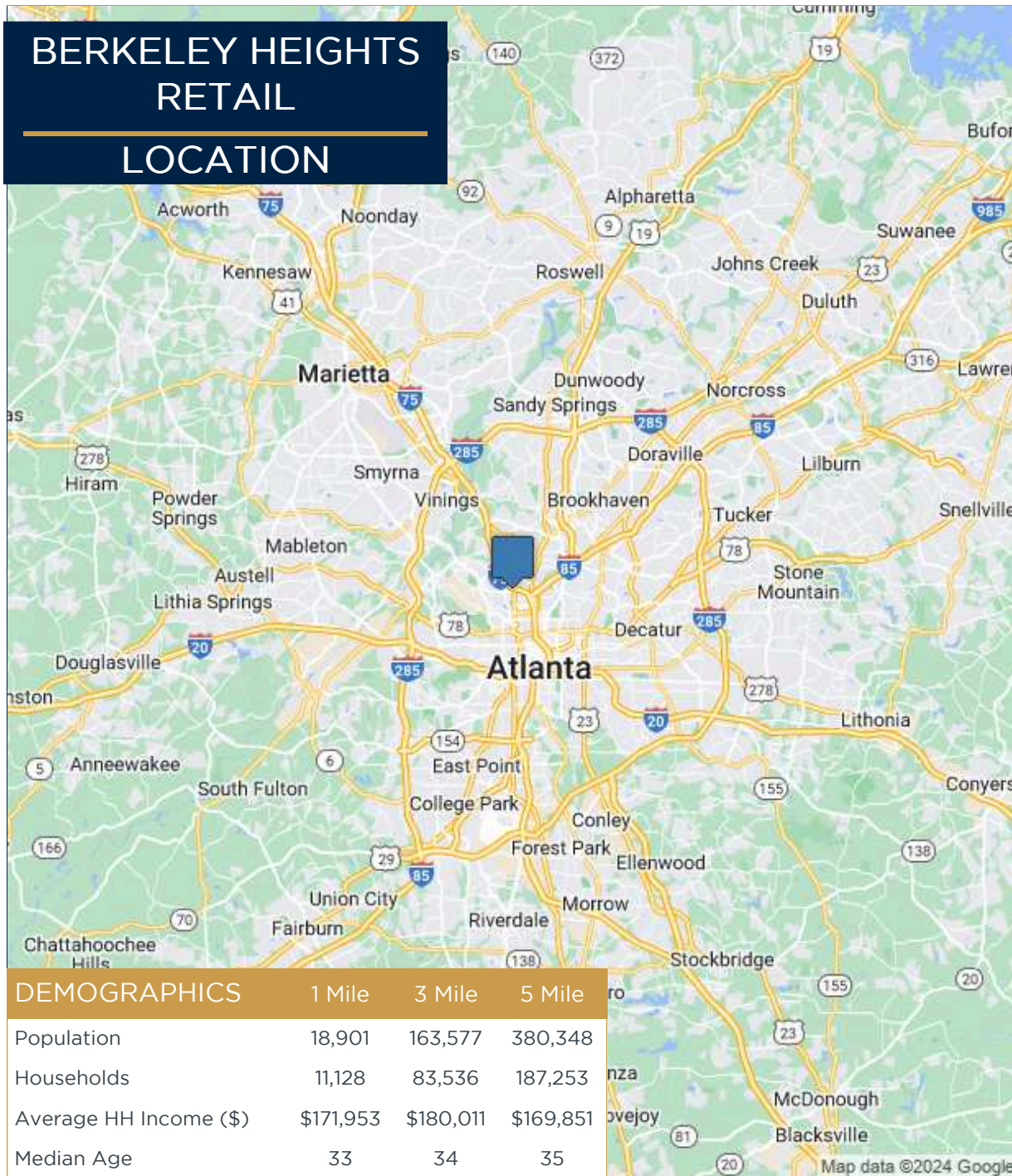


# BERKELEY HEIGHTS RETAIL SITE PLAN



A1	Little Azio	2,906 SF	B4	Lacquer Nail Bar	1,371 SF
A2	Available	900 SF	B5	Available Fall 2024	817 SF
A3	Back to Basics	2,423 SF	B6	Grecian Gyro	2,308 SF
A5	Ginya Izakaya	2,537 SF	C1	Allstate	699 SF
A7	Postnet	1,328 SF	C2	Dein's Barbershop	1,414 SF
B1 - B2	US Armed Forces	2,340 SF	C3	Shear Hair	939 SF
B3	Specialty Engraving	1,371 SF			

# BERKELEY HEIGHTS RETAIL LOCATION



## Property Information:

- Located in the North Midtown growth corridor.
- Tenants include: Little Azio's Pizza and a 181 unit Class "A" Apartment community
- Excellent ingress/egress located right off I-75 ramp on Northside Drive.
- Within 3 mile radius: There are 13,279 businesses, 135,285 employees, and a residential population of 127,632 having a household income of \$91,703.
- Closest traffic count to the site estimates 28,750 vehicles per day on Northside Drive.



# BERKELEY HEIGHTS RETAIL TRADE AREA

