

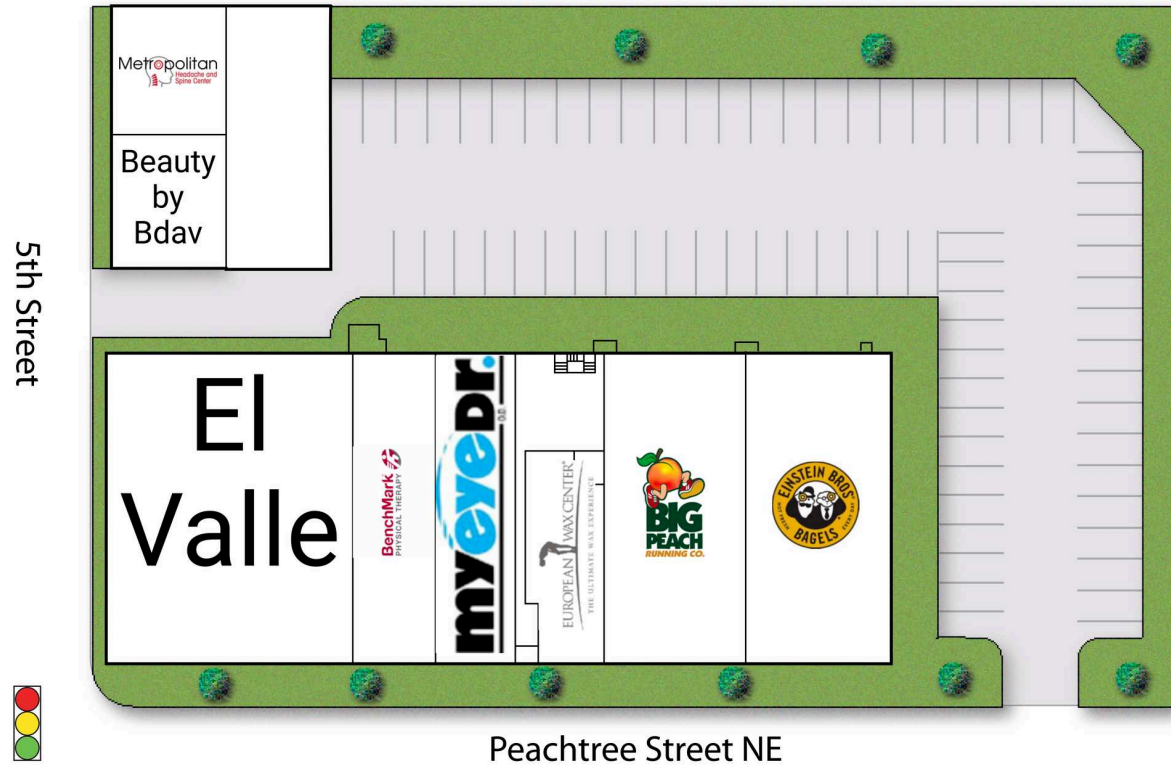
800 PEACHTREE

800 Peachtree St NE
Atlanta | GA | 30308



Leasing Contact: Dana Newby | 404-846-4033 | dnewby@cororealty.com

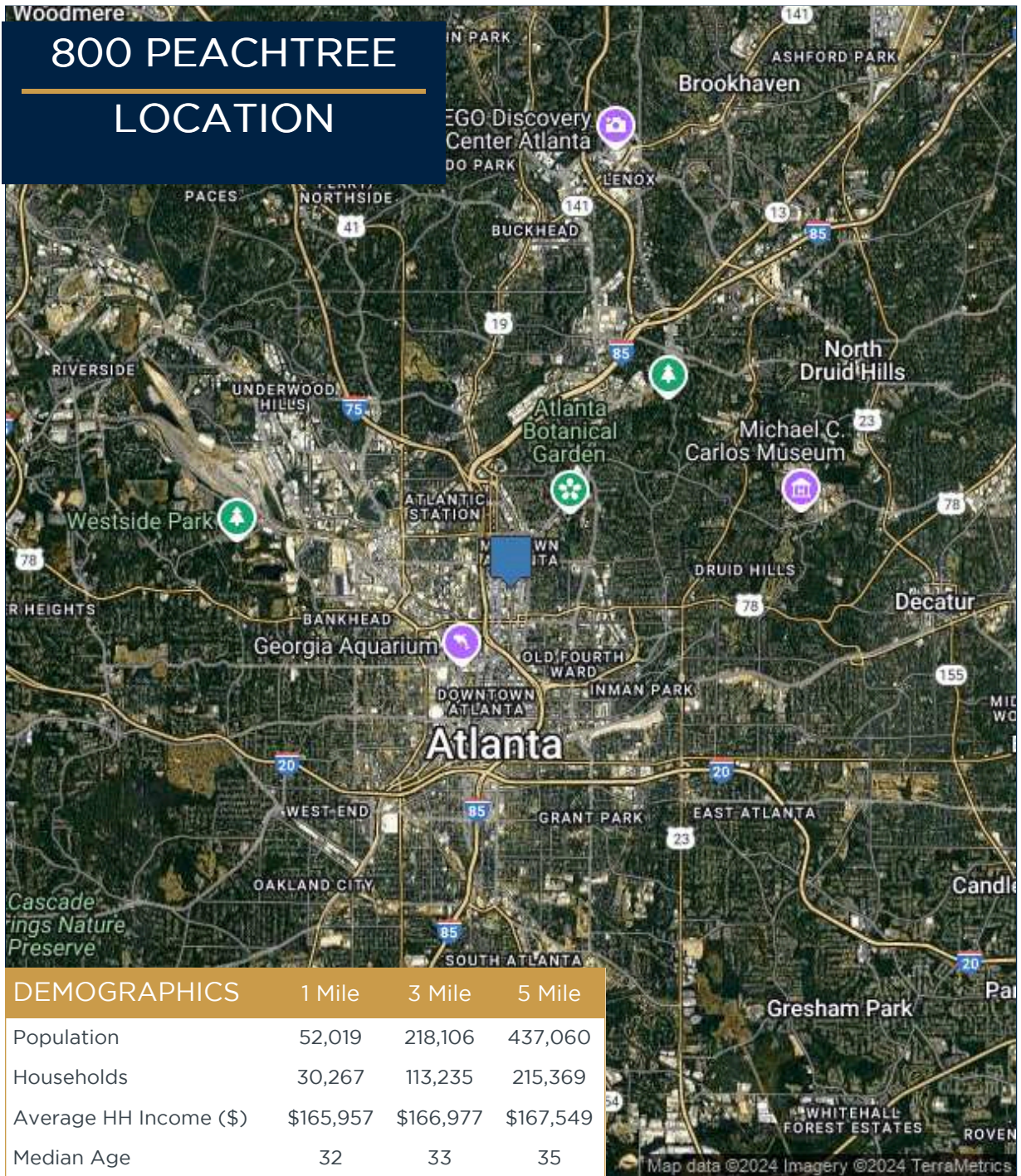
800 PEACHTREE SITE PLAN



A	Einstein Bros. Bagels	3,592 SF		Rehabilitation	
B	Big Peach Running Co.	4,522 SF	F	El Valle	5,730 SF
D	European Wax	1,259 SF		Metropolitan Headache and Spine Center	1,081 SF
E1	MyEyeDr	1,578 SF	G1		
E2	Benchmark	1,829 SF	G2	Beauty by Bdav	1,081 SF

Woodmere

800 PEACHTREE LOCATION



DEMOGRAPHICS	1 Mile	3 Mile	5 Mile
Population	52,019	218,106	437,060
Households	30,267	113,235	215,369
Average HH Income (\$)	\$165,957	\$166,977	\$167,549
Median Age	32	33	35

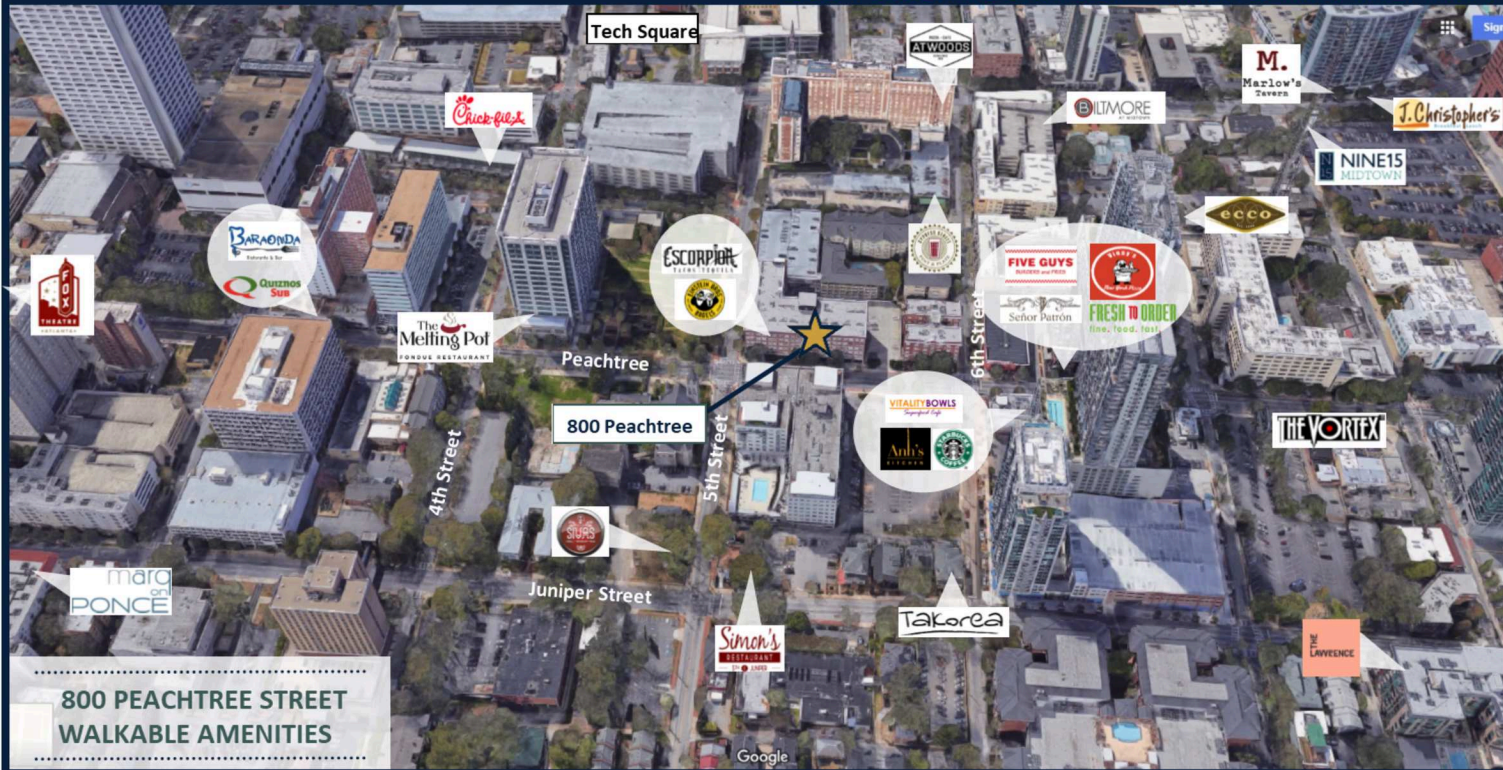


Property Information:

- Located on Peachtree Street, on Atlanta's Midtown Mile.
- Excellent visibility and frontage along Peachtree Street.
- Over 3,000 residential units located within a 5 minute walk.
- Sits below a loft-style condominium community, Cornerstone Village, that features historic architecture.
- A short walk to "Atlanta's Central Park", Piedmont Park.

800 PEACHTREE TRADE AREA

800 Peachtree Street —MIDTOWN, ATLANTA



800 PEACHTREE STREET WALKABLE AMENITIES

Restaurants			Apartments/Condominiums		Specialty/Other
Takorea	The Melting Pot	Chick-fil-a	Biltmore at Midtown	Cornerstone Village	Fox Theatre
Anh's Kitchen	Cypress Street Pint & Plate	The Vortex	100 Midtown Apartments	805 Peachtree Lofts	Tech Square
Vitality Bowls	Five Guys Burger and Fries	Ecco	Nine15 Midtown	Marq on Ponce	Marta Midtown
Starbucks	Vinny's Pizza	The Lawrence	Spire at Midtown		Piedmont Park
Escorpion	Senor Patron	Marlow's Tavern	Viewpoint		Margaret Mitchell House
Einstein Bros. Bagels	Fresh To Order	J. Christopher's			
Atwoods	Baraonda Ristorante & Bar	Quiznos Subs			