

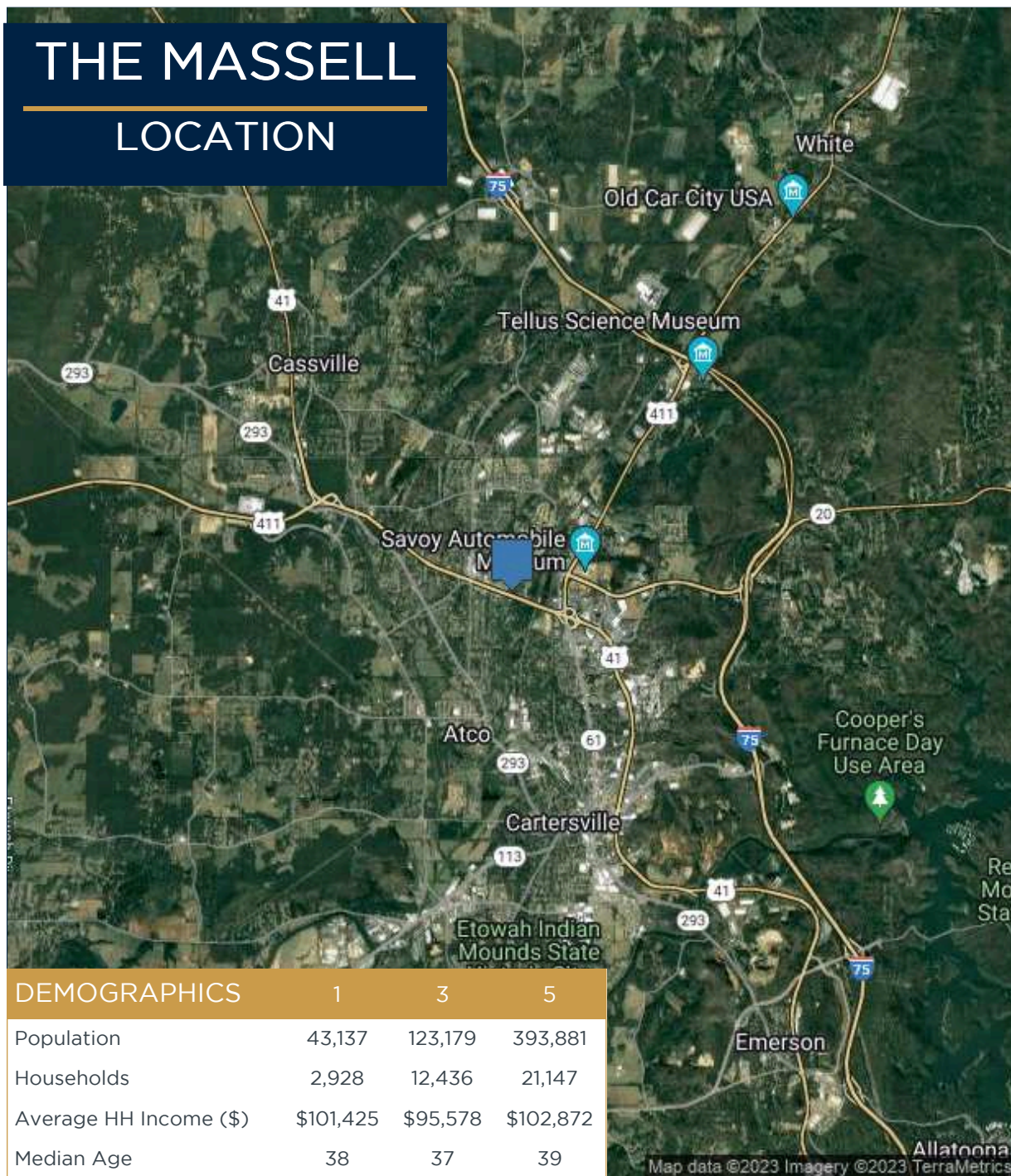
THE MASSELL

Cartersville | GA | 30121



THE MASSELL

LOCATION



| DEMOGRAPHICS | 1 | 3 | 5 |
|------------------------|-----------|----------|-----------|
| Population | 43,137 | 123,179 | 393,881 |
| Households | 2,928 | 12,436 | 21,147 |
| Average HH Income (\$) | \$101,425 | \$95,578 | \$102,872 |
| Median Age | 38 | 37 | 39 |



Property Information:

The Massell, scheduled for completion in mid-2024, will provide 210 garden-style multi-family units alongside a free-standing leasing and clubhouse equipped with Class A amenities. The Massell is a prototype building general contractor Summit Construction has successfully delivered over 20 times in various southeastern markets.

Located minutes from Piedmont Cartersville Hospital and Georgia Highlands College, The Massell has easy access to grocery and other retail shopping centers. Downtown Cartersville is less than a 5-minute drive from the property. The Booth Western Art Museum, Tellus Science Museum, Savoy Automobile Museum and Lake Point Sports Complex are easily accessible from The Massell. Interstate 75 is approximately 5 miles from the property site providing convenient connectivity to the area's quality employment opportunities.

THE MASSELL TRADE AREA

