

Demographic and Income Profile

31308
31308, Ellabell, Georgia
Ring: 1 mile radius

Prepared by Esri
Latitude: 32.19595
Longitude: -81.45843

Summary	Census 2010	Census 2020	2024	2029
Population	54	68	65	78
Households	18	21	26	31
Families	14	16	19	23
Average Household Size	3.00	3.24	2.50	2.52
Owner Occupied Housing Units	15	17	22	27
Renter Occupied Housing Units	3	4	4	4
Median Age	38.3	36.2	38.5	40.8

Trends: 2024-2029 Annual Rate	Area	State	National
Population	3.71%	0.61%	0.38%
Households	3.58%	0.86%	0.64%
Families	3.90%	0.75%	0.56%
Owner HHs	4.18%	1.32%	0.97%
Median Household Income	0.71%	3.20%	2.95%

Households by Income	2024		2029	
	Number	Percent	Number	Percent
<\$15,000	2	7.7%	2	6.5%
\$15,000 - \$24,999	1	3.8%	1	3.2%
\$25,000 - \$34,999	1	3.8%	1	3.2%
\$35,000 - \$49,999	2	7.7%	3	9.7%
\$50,000 - \$74,999	8	30.8%	9	29.0%
\$75,000 - \$99,999	4	15.4%	4	12.9%
\$100,000 - \$149,999	5	19.2%	7	22.6%
\$150,000 - \$199,999	2	7.7%	3	9.7%
\$200,000+	1	3.8%	1	3.2%

Median Household Income	\$70,383	\$72,908
Average Household Income	\$83,480	\$97,861
Per Capita Income	\$28,844	\$33,596

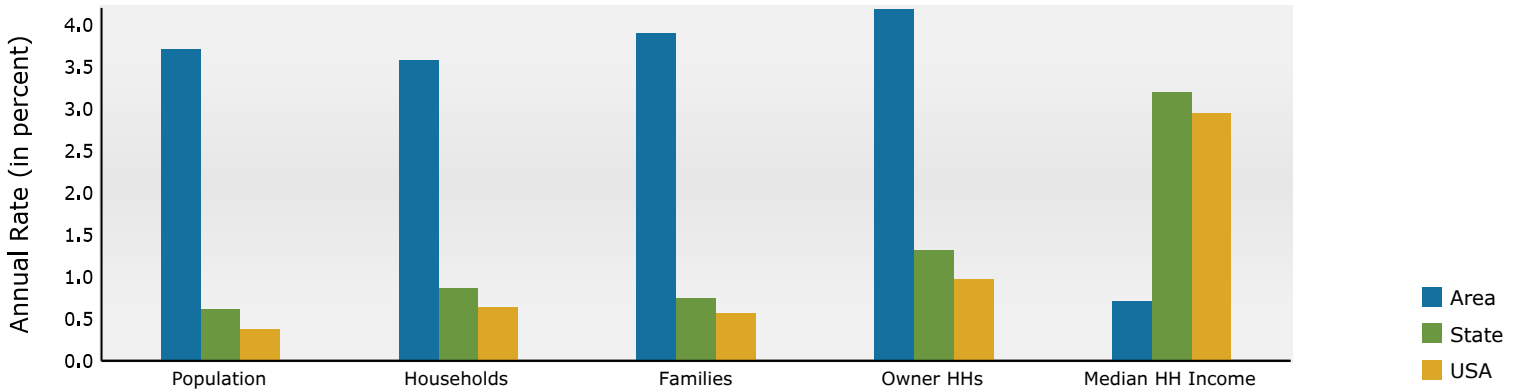
Population by Age	Census 2010		Census 2020		2024		2029	
	Number	Percent	Number	Percent	Number	Percent	Number	Percent
0 - 4	4	7.4%	5	7.4%	4	6.2%	5	6.2%
5 - 9	4	7.4%	5	7.4%	5	7.7%	5	6.2%
10 - 14	3	5.6%	5	7.4%	5	7.7%	6	7.5%
15 - 19	4	7.4%	5	7.4%	4	6.2%	5	6.2%
20 - 24	3	5.6%	3	4.4%	4	6.2%	4	5.0%
25 - 34	7	13.0%	9	13.2%	7	10.8%	9	11.2%
35 - 44	7	13.0%	8	11.8%	9	13.8%	11	13.8%
45 - 54	8	14.8%	8	11.8%	8	12.3%	10	12.5%
55 - 64	8	14.8%	8	11.8%	8	12.3%	10	12.5%
65 - 74	4	7.4%	7	10.3%	7	10.8%	9	11.2%
75 - 84	2	3.7%	2	2.9%	3	4.6%	5	6.2%
85+	0	0.0%	1	1.5%	1	1.5%	1	1.2%

Race and Ethnicity	Census 2010		Census 2020		2024		2029	
	Number	Percent	Number	Percent	Number	Percent	Number	Percent
White Alone	50	94.3%	58	85.3%	55	84.6%	65	83.3%
Black Alone	2	3.8%	5	7.4%	5	7.7%	6	7.7%
American Indian Alone	0	0.0%	0	0.0%	0	0.0%	0	0.0%
Asian Alone	0	0.0%	0	0.0%	0	0.0%	1	1.3%
Pacific Islander Alone	0	0.0%	0	0.0%	0	0.0%	0	0.0%
Some Other Race Alone	0	0.0%	1	1.5%	1	1.5%	1	1.3%
Two or More Races	1	1.9%	4	5.9%	4	6.2%	5	6.4%
Hispanic Origin (Any Race)	1	1.9%	2	2.9%	3	4.6%	3	3.8%

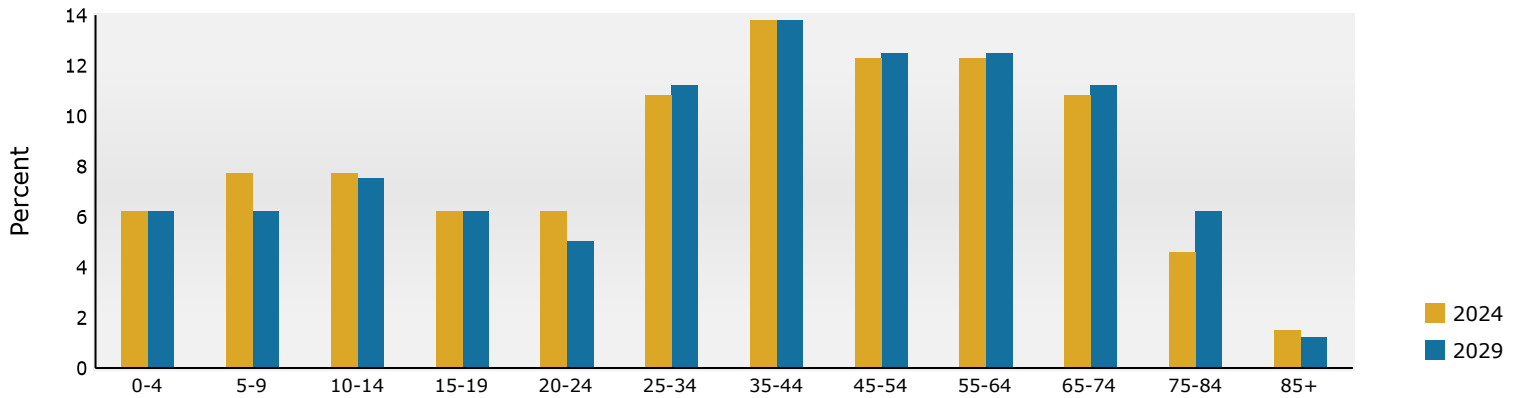
Data Note: Income is expressed in current dollars.

Source: Esri forecasts for 2024 and 2029. U.S. Census Bureau 2020 decennial Census in 2020 geographies.

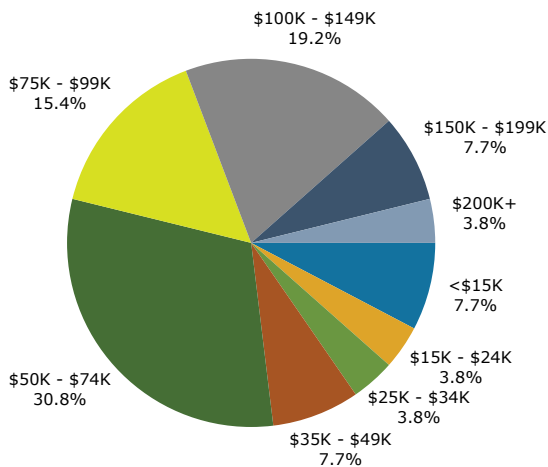
Trends 2024-2029



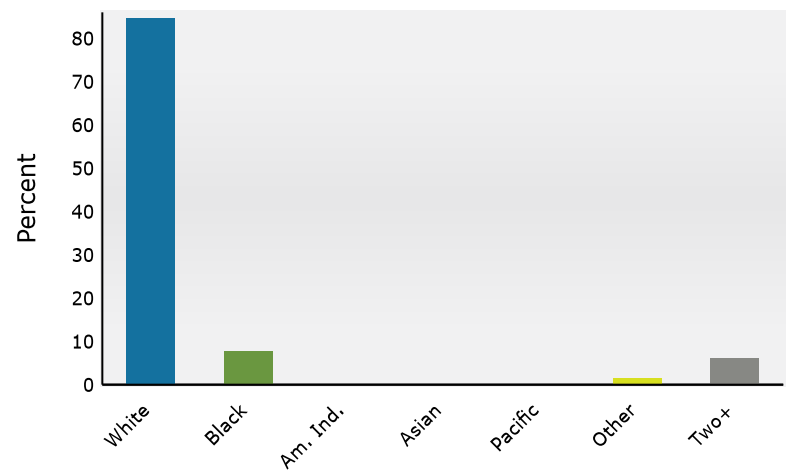
Population by Age



2024 Household Income



2024 Population by Race



2024 Percent Hispanic Origin: 4.6%

Source: Esri forecasts for 2024 and 2029. U.S. Census Bureau 2020 decennial Census in 2020 geographies.

Demographic and Income Profile

31308
31308, Ellabell, Georgia
Ring: 3 mile radius

Prepared by Esri
Latitude: 32.19595
Longitude: -81.45843

Summary	Census 2010	Census 2020	2024	2029
Population	1,476	1,776	2,021	2,398
Households	531	614	728	865
Families	407	461	537	636
Average Household Size	2.78	2.89	2.78	2.77
Owner Occupied Housing Units	434	498	605	735
Renter Occupied Housing Units	97	116	123	130
Median Age	37.5	37.8	39.0	40.3

Trends: 2024-2029 Annual Rate	Area	State	National
Population	3.48%	0.61%	0.38%
Households	3.51%	0.86%	0.64%
Families	3.44%	0.75%	0.56%
Owner HHs	3.97%	1.32%	0.97%
Median Household Income	2.22%	3.20%	2.95%

Households by Income	2024		2029	
	Number	Percent	Number	Percent
<\$15,000	55	7.6%	49	5.7%
\$15,000 - \$24,999	32	4.4%	26	3.0%
\$25,000 - \$34,999	53	7.3%	46	5.3%
\$35,000 - \$49,999	69	9.5%	80	9.2%
\$50,000 - \$74,999	199	27.3%	230	26.6%
\$75,000 - \$99,999	112	15.4%	127	14.7%
\$100,000 - \$149,999	136	18.7%	181	20.9%
\$150,000 - \$199,999	55	7.6%	99	11.4%
\$200,000+	18	2.5%	27	3.1%

Median Household Income	\$67,402	\$75,216
Average Household Income	\$82,350	\$95,284
Per Capita Income	\$29,407	\$33,939

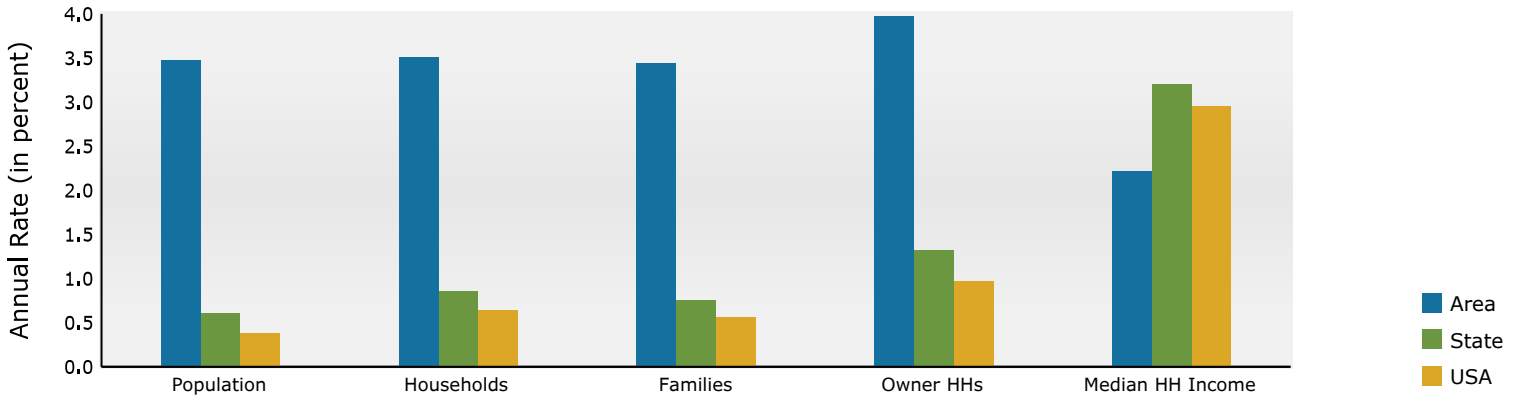
Population by Age	Census 2010		Census 2020		2024		2029	
	Number	Percent	Number	Percent	Number	Percent	Number	Percent
0 - 4	110	7.5%	116	6.5%	126	6.2%	147	6.1%
5 - 9	107	7.2%	128	7.2%	142	7.0%	151	6.3%
10 - 14	97	6.6%	128	7.2%	146	7.2%	165	6.9%
15 - 19	102	6.9%	122	6.9%	133	6.6%	150	6.3%
20 - 24	83	5.6%	92	5.2%	115	5.7%	130	5.4%
25 - 34	194	13.1%	237	13.3%	236	11.7%	282	11.8%
35 - 44	185	12.5%	232	13.1%	274	13.6%	329	13.7%
45 - 54	233	15.8%	223	12.6%	256	12.7%	305	12.7%
55 - 64	202	13.7%	240	13.5%	263	13.0%	293	12.2%
65 - 74	102	6.9%	165	9.3%	204	10.1%	270	11.3%
75 - 84	49	3.3%	69	3.9%	94	4.7%	138	5.8%
85+	12	0.8%	24	1.4%	30	1.5%	38	1.6%

Race and Ethnicity	Census 2010		Census 2020		2024		2029	
	Number	Percent	Number	Percent	Number	Percent	Number	Percent
White Alone	1,319	89.4%	1,481	83.4%	1,668	82.6%	1,955	81.5%
Black Alone	109	7.4%	151	8.5%	182	9.0%	225	9.4%
American Indian Alone	6	0.4%	5	0.3%	5	0.2%	6	0.3%
Asian Alone	7	0.5%	11	0.6%	13	0.6%	17	0.7%
Pacific Islander Alone	0	0.0%	1	0.1%	1	0.0%	1	0.0%
Some Other Race Alone	8	0.5%	20	1.1%	25	1.2%	33	1.4%
Two or More Races	26	1.8%	108	6.1%	126	6.2%	161	6.7%
Hispanic Origin (Any Race)	32	2.2%	53	3.0%	70	3.5%	91	3.8%

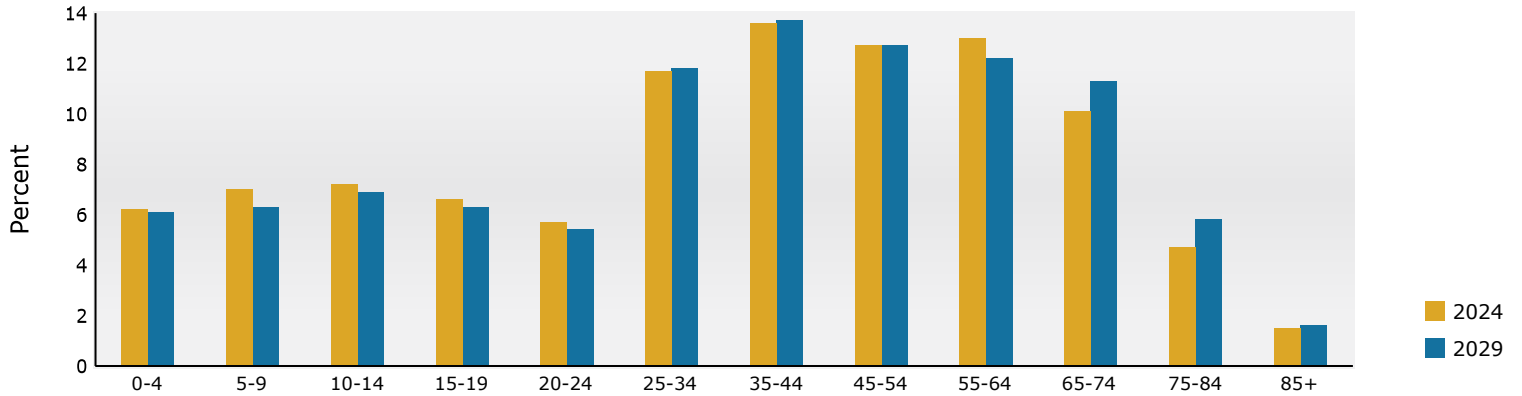
Data Note: Income is expressed in current dollars.

Source: Esri forecasts for 2024 and 2029. U.S. Census Bureau 2020 decennial Census in 2020 geographies.

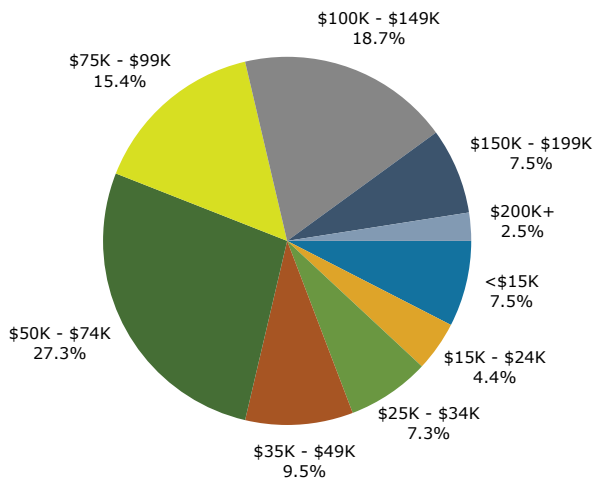
Trends 2024-2029



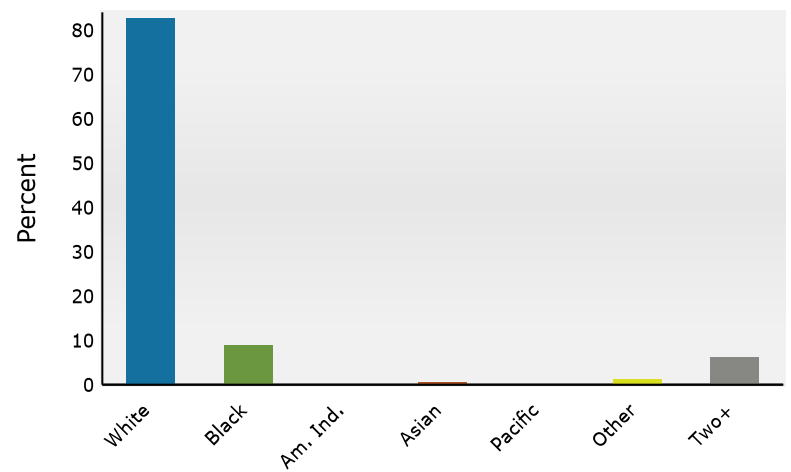
Population by Age



2024 Household Income



2024 Population by Race



2024 Percent Hispanic Origin: 3.5%

Source: Esri forecasts for 2024 and 2029. U.S. Census Bureau 2020 decennial Census in 2020 geographies.

Demographic and Income Profile

31308
31308, Ellabell, Georgia
Ring: 5 mile radius

Prepared by Esri
Latitude: 32.19595
Longitude: -81.45843

Summary	Census 2010	Census 2020	2024	2029
Population	7,922	9,084	10,489	12,032
Households	2,917	3,324	3,855	4,457
Families	2,223	2,488	2,833	3,262
Average Household Size	2.72	2.73	2.72	2.70
Owner Occupied Housing Units	2,381	2,698	3,204	3,794
Renter Occupied Housing Units	536	626	651	663
Median Age	38.2	39.0	39.9	40.7

Trends: 2024-2029 Annual Rate	Area	State	National
Population	2.78%	0.61%	0.38%
Households	2.94%	0.86%	0.64%
Families	2.86%	0.75%	0.56%
Owner HHs	3.44%	1.32%	0.97%
Median Household Income	2.19%	3.20%	2.95%

Households by Income	2024		2029	
	Number	Percent	Number	Percent
<\$15,000	312	8.1%	275	6.2%
\$15,000 - \$24,999	167	4.3%	132	3.0%
\$25,000 - \$34,999	347	9.0%	279	6.3%
\$35,000 - \$49,999	329	8.5%	347	7.8%
\$50,000 - \$74,999	774	20.1%	879	19.7%
\$75,000 - \$99,999	664	17.2%	762	17.1%
\$100,000 - \$149,999	740	19.2%	976	21.9%
\$150,000 - \$199,999	337	8.7%	562	12.6%
\$200,000+	185	4.8%	246	5.5%

Median Household Income	\$74,930	\$83,516
Average Household Income	\$90,285	\$104,355
Per Capita Income	\$32,703	\$38,124

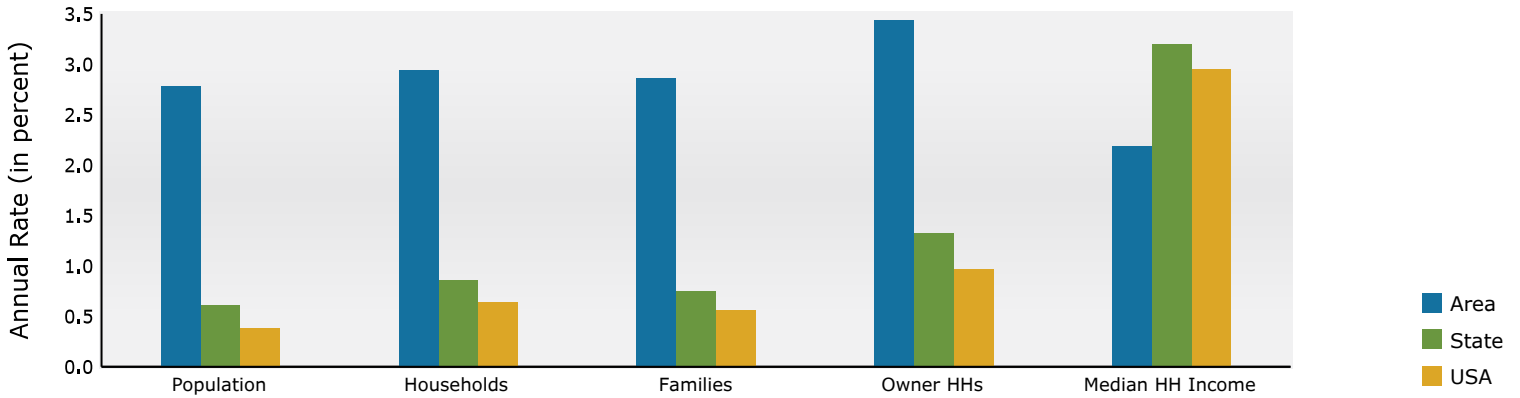
Population by Age	Census 2010		Census 2020		2024		2029	
	Number	Percent	Number	Percent	Number	Percent	Number	Percent
0 - 4	548	6.9%	582	6.4%	643	6.1%	729	6.1%
5 - 9	589	7.4%	652	7.2%	738	7.0%	748	6.2%
10 - 14	531	6.7%	618	6.8%	758	7.2%	832	6.9%
15 - 19	567	7.2%	610	6.7%	666	6.3%	755	6.3%
20 - 24	446	5.6%	478	5.3%	585	5.6%	630	5.2%
25 - 34	934	11.8%	1,104	12.2%	1,192	11.4%	1,421	11.8%
35 - 44	1,083	13.7%	1,181	13.0%	1,390	13.3%	1,569	13.0%
45 - 54	1,329	16.8%	1,197	13.2%	1,349	12.9%	1,526	12.7%
55 - 64	1,024	12.9%	1,341	14.8%	1,436	13.7%	1,516	12.6%
65 - 74	577	7.3%	838	9.2%	1,081	10.3%	1,428	11.9%
75 - 84	237	3.0%	369	4.1%	503	4.8%	688	5.7%
85+	58	0.7%	113	1.2%	148	1.4%	189	1.6%

Race and Ethnicity	Census 2010		Census 2020		2024		2029	
	Number	Percent	Number	Percent	Number	Percent	Number	Percent
White Alone	7,083	89.4%	7,590	83.6%	8,641	82.4%	9,767	81.2%
Black Alone	595	7.5%	713	7.8%	881	8.4%	1,064	8.8%
American Indian Alone	28	0.4%	36	0.4%	38	0.4%	43	0.4%
Asian Alone	40	0.5%	42	0.5%	53	0.5%	69	0.6%
Pacific Islander Alone	2	0.0%	4	0.0%	6	0.1%	8	0.1%
Some Other Race Alone	44	0.6%	117	1.3%	161	1.5%	205	1.7%
Two or More Races	130	1.6%	582	6.4%	708	6.8%	876	7.3%
Hispanic Origin (Any Race)	145	1.8%	310	3.4%	428	4.1%	547	4.5%

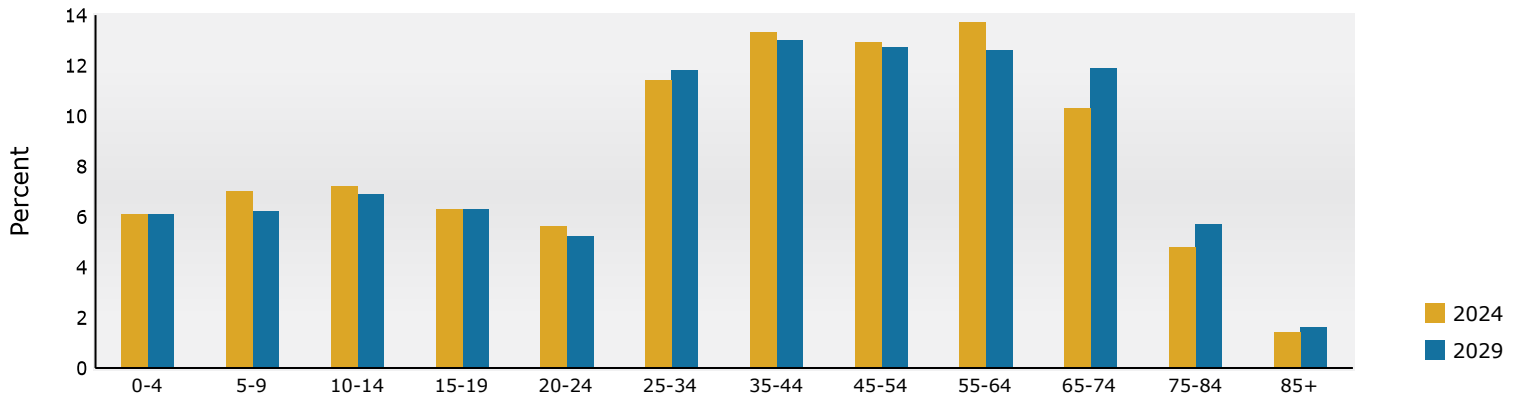
Data Note: Income is expressed in current dollars.

Source: Esri forecasts for 2024 and 2029. U.S. Census Bureau 2020 decennial Census in 2020 geographies.

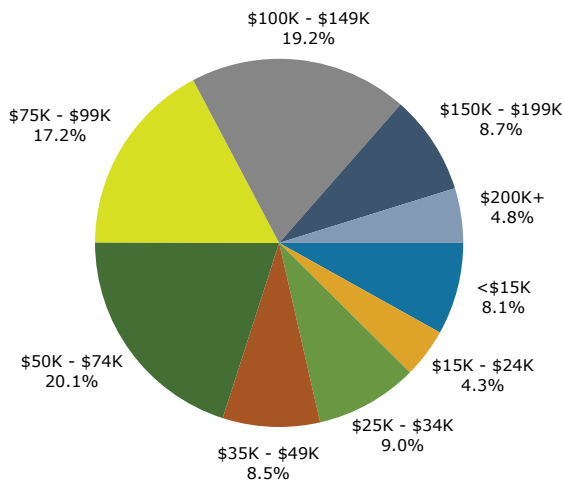
Trends 2024-2029



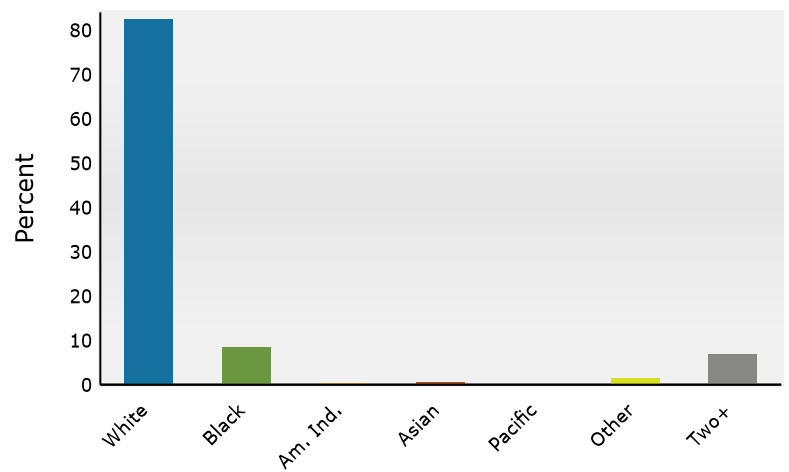
Population by Age



2024 Household Income



2024 Population by Race



2024 Percent Hispanic Origin: 4.1%

Source: Esri forecasts for 2024 and 2029. U.S. Census Bureau 2020 decennial Census in 2020 geographies.